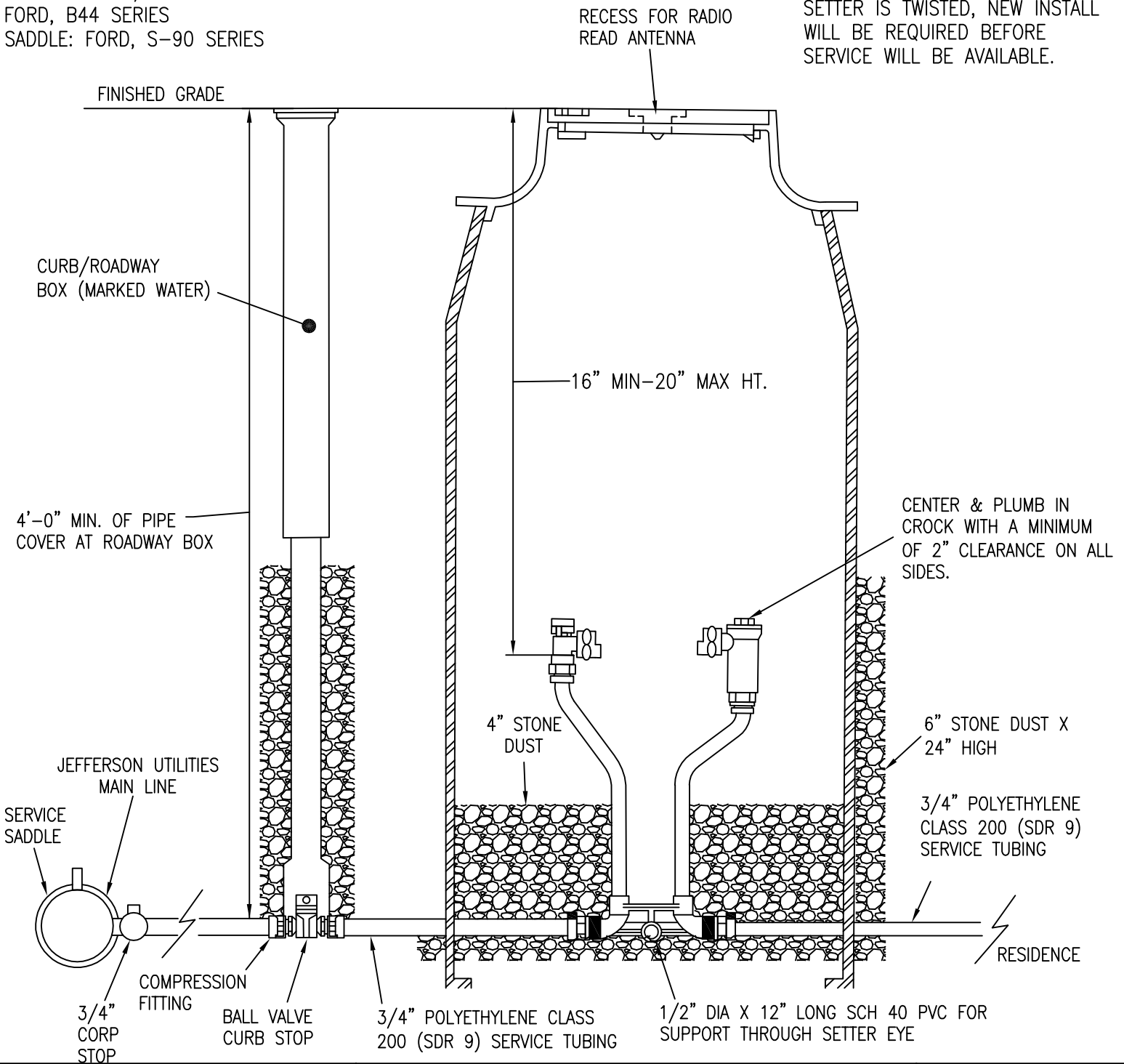


NOTES:

BOX: 18X22X30 BULLET METER BOX
 LID: AYM 74 MAL 115
 SETTER: VBHC 72-12W 44-33 (EITHER 12" OR 16" HIGH)
 TUBING: 3/4 CTS HDPE TUBING - 200 PSI
 METER: 3/4" X 5/8" NEPTUNE R-900i
 CORP STOP: 3/4 FB1000-3
 FORD, B44 SERIES
 SADDLE: FORD, S-90 SERIES

NOTE:

WHEN INSTALLING THE SETTER, THE USE OF A JUMPER OR IDLER PIPE IS REQUIRED TO ELIMINATE TWISTING OF THE SETTER. WHEN INSPECTION IS COMPLETED BY JEFFERSON UTILITIES' STAFF, IF SETTER IS TWISTED, NEW INSTALL WILL BE REQUIRED BEFORE SERVICE WILL BE AVAILABLE.



Jefferson Utilities Inc.

270 Industrial Boulevard
 Kearneysville, WV 25430

5/8 x 3/4 COPPERSETTER

•Not to Scale•

W-5.00

REVISED:
 AUGUST 5, 2014