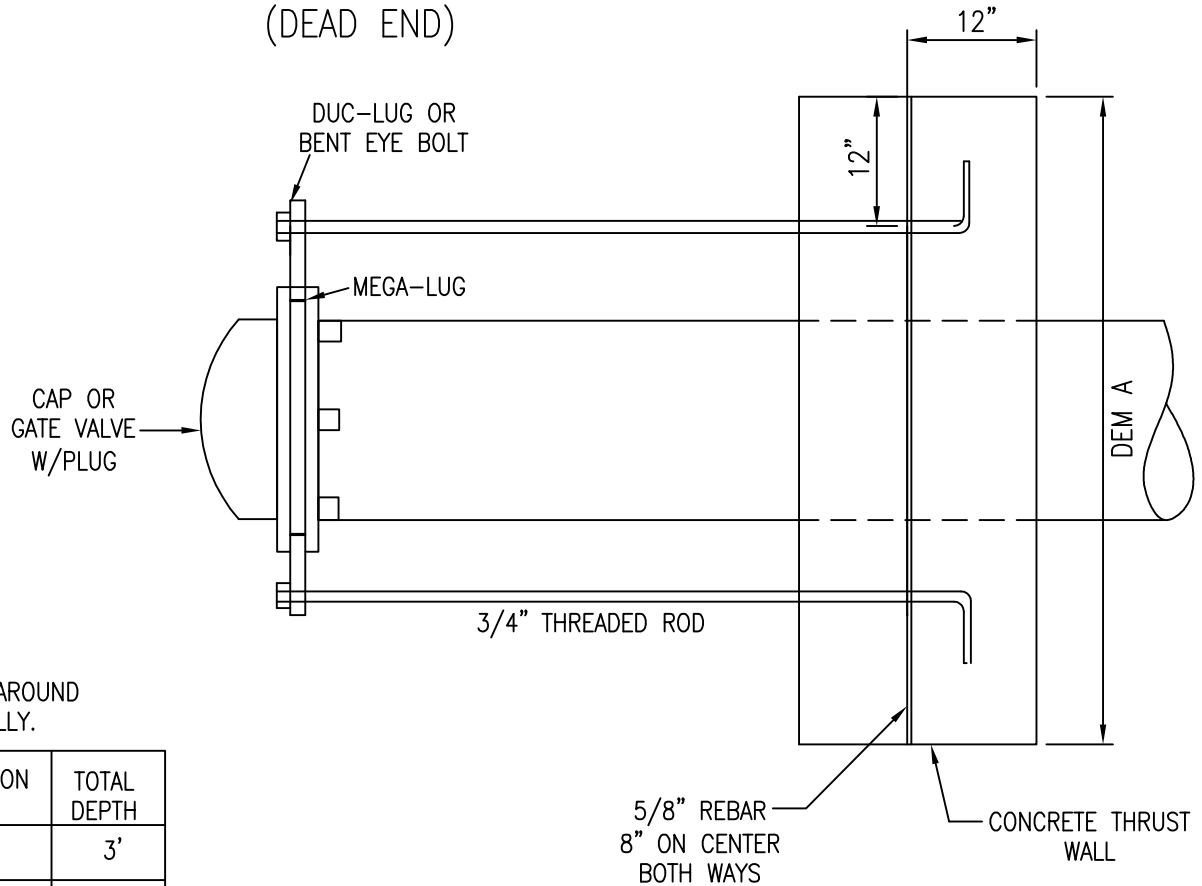


PERMANENT CAP THRUST BLOCK
(DEAD END)



TEMPORARY CAP THRUST BLOCK/WALL
(DEAD END)

NOTE:

THRUST WALL TO BE CENTERED AROUND
PIPE HORIZONTALLY AND VERTICALLY.

PIPE SIZE	# THREADED RODS	DIMENSION A	TOTAL DEPTH
4"	2	3'	3'
6"	2	4'	4'
8"	2	4'	4'
10"	2	5'	5'
12"	4	6'	6'
16"	4	8'	8'

Jefferson Utilities Inc.

270 Industrial Boulevard
Kearneysville, WV 25430

**PERMANENT AND
TEMPORARY THRUST
BLOCK/WALL**

Not to Scale

W-2.01

APPROVED DATE:
May 10, 2010